

The Courses & Distances  
Down the Creek beginning  
at a WOT

N 46 W 52

N 65 W 57

N 29 W 48

S 52 W 27

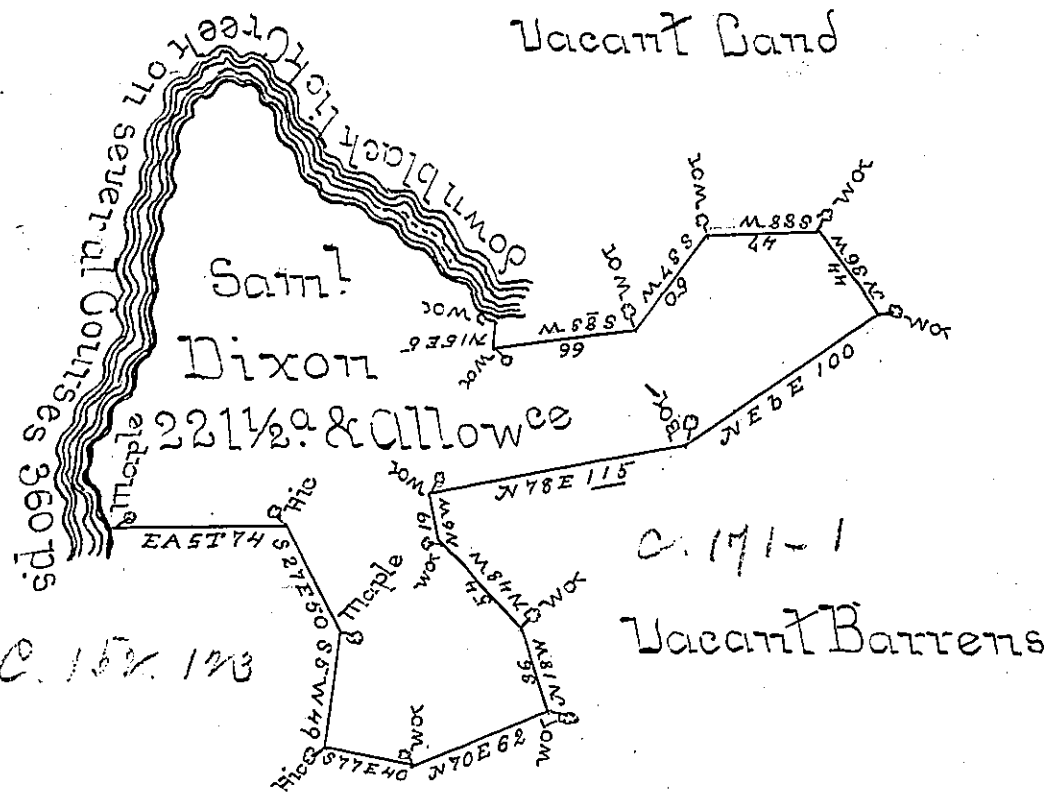
S 12 W 62

S 3 E 33

S 27 W 61

S 18 E 20 ps to Maple

360



Vacant Barrens C. 157. 123

The Hop Bottom Survey of Samuel Dixon on the 21<sup>st</sup>  
Day of May 1770 Containing Two hundred twenty one  
Acres & an half & the Usual Allowance of Six P.C. Situate  
on the East Side of Black lick Creek in Cumberland Co-  
unity By Order of the 17<sup>th</sup> Day of April 1769 No 3095  
now Westmoreland County

Joshua Sider D.S.

To John Bukens Esq. Sheriff

IN TESTIMONY that the above is a copy of the original remaining on file in the  
Department of Internal Affairs of Pennsylvania, made con-  
formably to an Act of Assembly approved the 16th day of  
February, 1833, I have hereunto set my Hand and caused  
the Seal of said Department to be affixed at Harrisburg, this  
second day of February 1897

James W. Latta  
Secretary of Internal Affairs.